

Part number:

HYDROMA

HYDRAULICKÉ SYSTÉMY

**HIDROMA
SISTEMS**

UKŁADY HYDRAULICZNE

HYDROMA

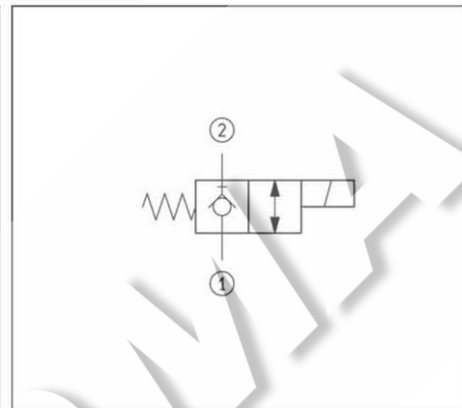
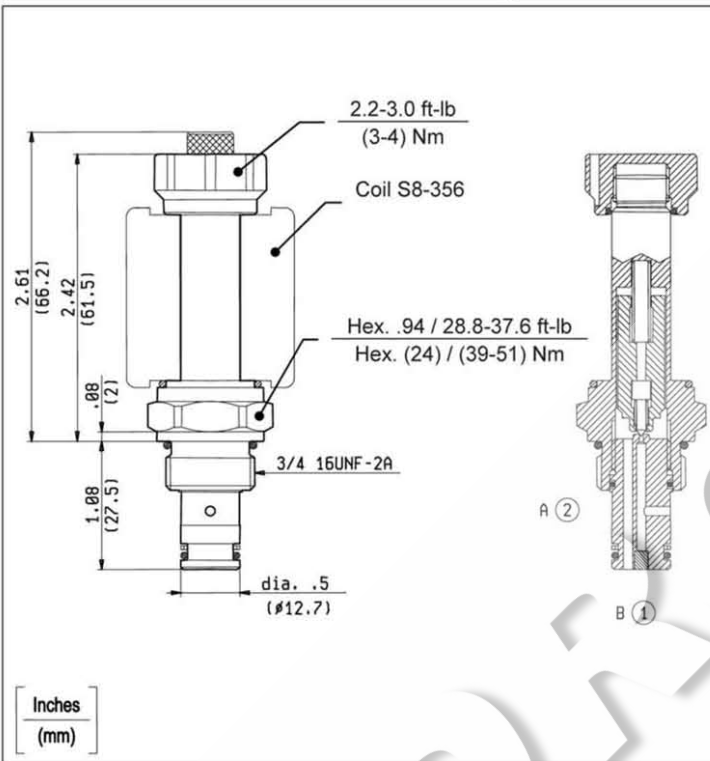
ГИДРАВЛИЧЕСКИЕ СИСТЕМЫ

**SOLENOID OPERATED VALVES
POPPET 2-WAY NORMALLY CLOSED
COMMON CAVITY**

VED-8I-2B-01-NC

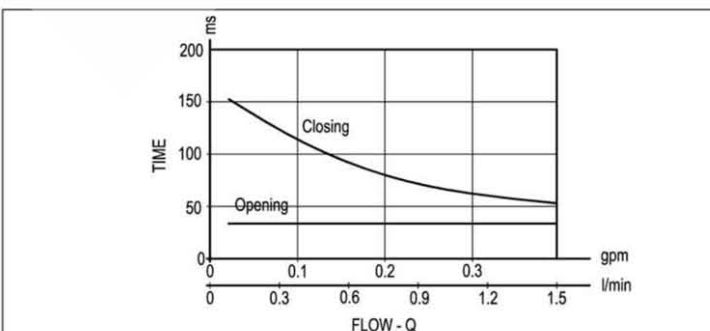
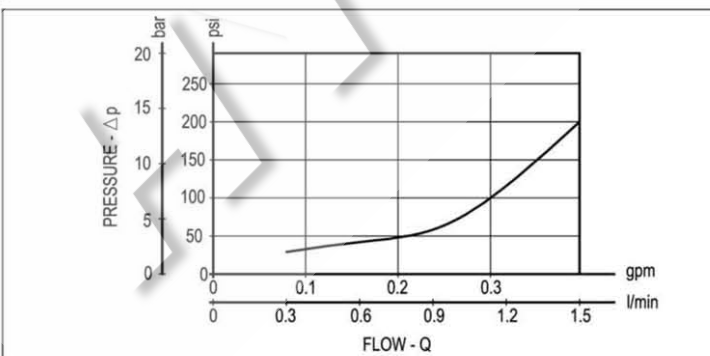
SIZE 08

OD.11.03.18 - Y - 00



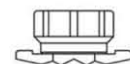
TECHNICAL DATA

| | |
|--------------------------------------|----------------------|
| Maximum Operating Pressure | 5000 psi (350 bar) |
| Rated Flow | 0.4 gpm (1.5 l/min) |
| Cavity - Tooling (CA-08A-2N) | page CT.A.001.U |
| Line bodies | page MN2.A... |
| Weight | 0.286 lbs (0.130 kg) |
| Fluids - Temperatures | page 7.01.040 |
| Testing Conditions - Seals | page 7.01.040 |
| Internal Leakage | page 7.01.040 |
| Filtration : 25 µm nominal or better | page 7.01.050 |
| Minimum Voltage Required | 90% of nominal |
| Coils must be ordered separately | page 1.71.042 |
| Mounting Position | unrestricted |



Y ORDERING OPTIONS

31 Standard



32 Knob Override

Style

Manual

