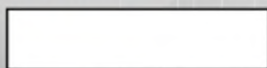


Part number:

**HYDROMA**

HYDRAULICKÉ SYSTÉMY

**HIDROMA
SYSTEMS**

UKŁADY HYDRAULICZNE

HYDROMA

ГИДРАВЛИЧЕСКИЕ СИСТЕМЫ

Priority unloading pilot operated

Common cavity, Size 10

RE 18318-17

VMSP-78

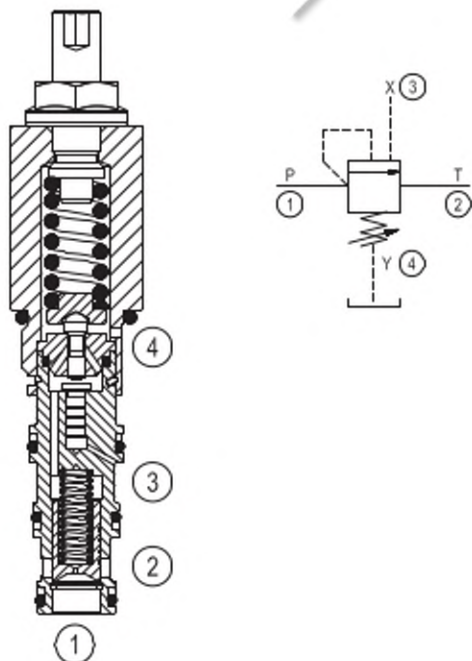
04.75.10 - X - 99 - Z



Technical data	
Max. operating pressure port 1-3	350 bar (5000 psi)
Max. pressure admitted port 2	210 bar (3000 psi)
Flow range	5 - 30 l/min (1.3 - 8 gpm)
Max. internal leakage ¹⁾	25 cm ³ /min. (1.5 cu.in./min.)
Fluid temperature range	-30 to 100 °C (-22 to 212 °F)
Installation torque	41 - 47 Nm (30 - 35 ft-lbs)
Weight	0.28 kg (0.62 lbs)
Cavity	CA-10A-4N (see data sheet 18325-70)
Lines bodies and standard assemblies	Please refer to section "Hydraulic integrated circuit" or consult factory
Seal kit ²⁾	Code: RG0308010520100 material no: R30005801
Fluids	Mineral-based or synthetics with lubricating properties at viscosities of 10 to 500 mm ² /s (cSt)
Recommended degree of fluid contamination	Nominal value max. 10µm (NAS 8) / ISO 4406 19/17/14
Installation position	No restrictions
Other Technical Data	See data sheet 18350-50

Description

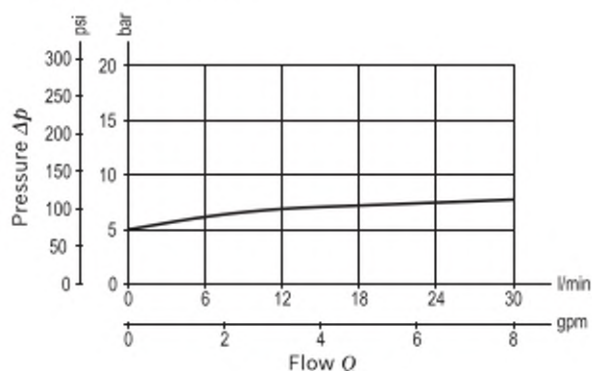
Flow is blocked from 1 to 2 until pressure increases to meet the selected valve setting, lifting the small, pilot-stage poppet from its seat. This action exhausts oil above the main-stage piston (spool type), allowing it to shift fully and unload flow from 1 through 2 with minimal pressure drop. Similarly, when remote pilot pressure at 3 exceeds the pressure setting, a secondary piston lifts the pilot-stage poppet from its seat, again exhausting fluid from 1 through 2. The spring chamber is drained to tank at 4. Any pressure at 4 will be additive to the valve setting.



1) Measured at 200 bar (2900 psi)

2) Only external seals for 10 valves

Setting is performed pressurizing "X" port.

Characteristic curve

Ordering code

04.75.10	X	99	Z	00	*
-----------------	----------	-----------	----------	-----------	----------

Priority unloading pilot operated

Differential unloading / reload

03 Re-seat at (85±2.5)% of pressure setting**99** Common cavity, CA-10A-4N
(old code cartridge style)Series 0/A to L
unchanged performances and dimensions

Version and options standard

SPRINGS			
	Adj. press. range bar (psi)	Pressure increase bar/turn (psi/turn)	Std. setting bar (psi) Q=5 l/min
10	7-105 (100-1500)	26 (377)	70 (1000)
20	90-210 (1300-3000)	31 (450)	120 (1750)
35	150-350 (2200-5000)	105 (1523)	200 (2900)

Note: Special settings available. Contact factory authorized representative for ordering code.

Preferred types

Type	Material number
04751003991000D	R930005772
04751003992000D	R930005779
04751003993500C	R930005780

Type	Material number

Dimensions