

Part number:

**HYDROMA**

HYDRAULICKÉ SYSTÉMY

HIDROMA
SISTEMS

UKŁADY HYDRAULICZNE

HYDROMA

ГИДРАВЛИЧЕСКИЕ СИСТЕМЫ

Solenoid operated valves pilot operated poppet type

2-way normally open

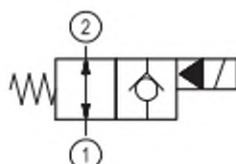
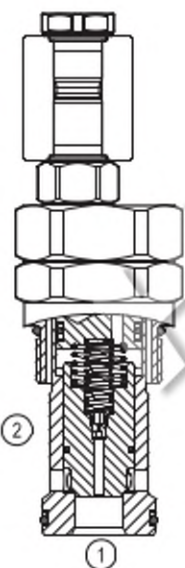
Special cavity, 004

RE 18323-31

Edition: 03.2017

VEI-16-NA

OD.15.04.04 - Y - Z

**PATENT PENDING****Technical data**

New VEI-16 family incorporates a new solenoid concept providing excellent performance and enables cartridges to work in severe environment. Cartridges also incorporates advanced design of hydraulic parts providing excellent hydraulic performance.

Technical data

General	
Weight	1.13 kg (2.5 lbs)
Installation orientation	Optional
Ambient temperature range	-30 to 90 °C (-22 to 194 °F)
Hydraulic	
Max. operating pressure	350 bar (5000 psi)
Max. proof pressure	420 bar (6000 psi)
Rated flow	260 l/min (69 gpm)
Fatigue cycle life	1 million cycles at 350 bar
Max. internal leakage	20 drops/min.
Fluid temperature range	-20 to 80 °C (-4 to 176 °F)
Fluids: Mineral-based or synthetics with lubricating properties at viscosities of 20 to 380 mm ² /s (cSt)	
Installation torque	110 - 130 Nm (81 - 96 ft-lbs)
Recommended degree of fluid contamination	Nominal value max. 25 µm (NAS 8) ISO 4406 19/17/14
Special cavity	004 see 18325-75
Lines bodies and standard assemblies	Please refer to section "Hydraulic integrated circuit" or consult factory
Seal kit	code material no. RG0004020520100 R930001696
Seal kit coil	code material no. RG0120010000100 R930058940
Other technical data	See data sheet 18350-50
Electrical	
Type of voltage	DC voltage
Coil type	D36 see 18325-90
Supply voltage	See data sheet 18325-90
Voltage tolerance against ambient temperature	See characteristic curve
Power consumption	20 W
Duty cycle coil	See characteristic curves %
Type of protection	See data sheet 18325-90
Note: Coils must be ordered separately	

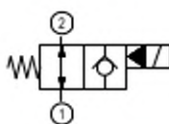
Ordering code

OD.15	04	04	Y	Z	0000	*
-------	----	----	---	---	------	---

Solenoid operated valves
pilot operated poppet type
2-way normally open

Series O/A to L
unchanged performances and dimensions

monodirectional type



04

0 = With buna seal
V = With Viton seal

A = Standard
B = Push style manual override
C = Push and twist style manual override

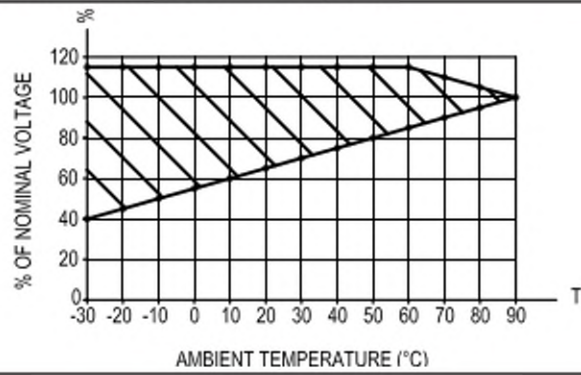
Special cavity: 004

Type	Material number
OD150404A000000	R930064863
OD150404B000000	R930064864
OD150404C000000	R930064865

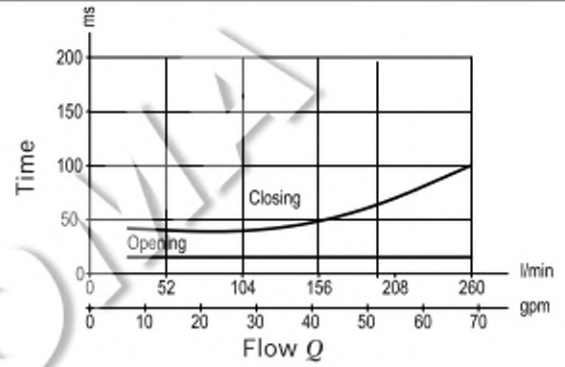
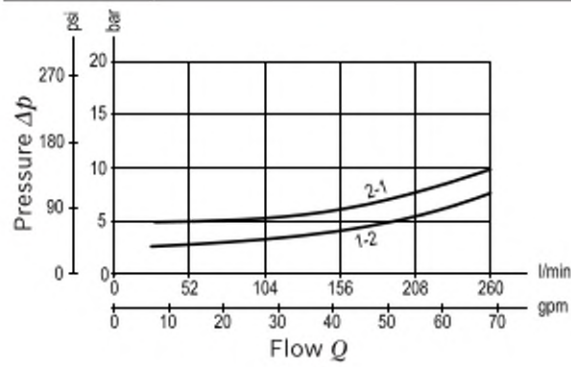
Type	Material number

Characteristic curves

All Versions - Admissible supply voltage Vs. Ambient temperature at 100% duty cycle



Version 04



Dimensions

Solenoid operated valves, poppet 2-way
normally closed