

Part number:

HYDROMA

HYDRAULICKÉ SYSTÉMY

**HIDROMA
SISTEMS**

UKŁADY HYDRAULICZNE

HYDROMA

ГИДРАВЛИЧЕСКИЕ СИСТЕМЫ

Solenoid operated valves pilot operated poppet type
2-way normally open
Common cavity, Size 10

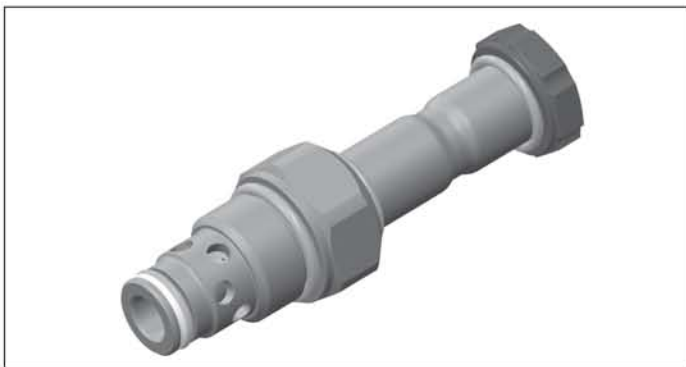
VEI-16-10A-NA

OD.15 - X - 36 - Y - Z - 00

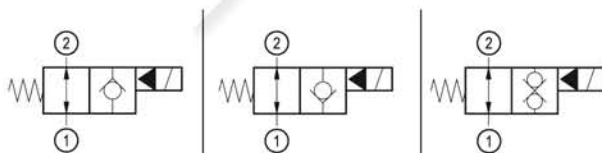
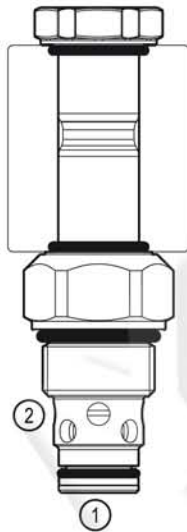
RE 18323-33

Edition: 04.2018

Replaces: 12.2017



PATENT PENDING



Technical data

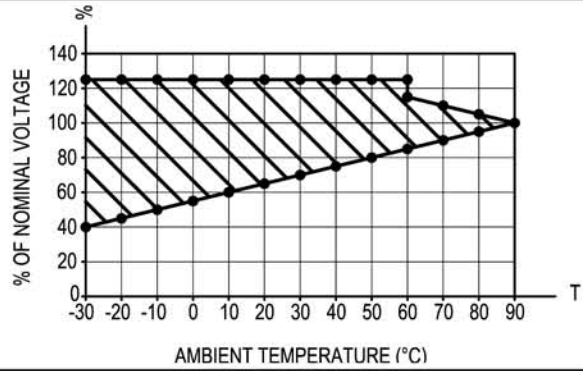
New VEI-16 family incorporates a new solenoid concept providing excellent performance and enables cartridges to work in severe environment. Cartridges also incorporate advanced design of hydraulic parts providing excellent hydraulic performance.

Technical data

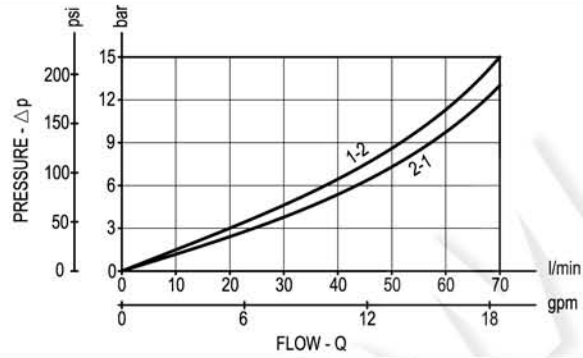
General		
Weight		0.16 kg (0.35 lbs)
Installation orientation		Unrestricted
Ambient temperature range		-30 to 90 °C (-22 to 194 °F)
Hydraulic		
Max. operating pressure		350 bar (5000 psi)
Flow range		2 - 70 l/min (0.53 - 18 gpm)
Fatigue cycle life		2 million cycles at 350 bar
Max. internal leakage:		20 drops/min.
Switching time		Opening ≤ 50 ms Closing ≤ 100 ms
Fluid temperature range		-20 to 80 °C (-4 to 176 °F)
Fluids: Mineral-based or synthetics with lubricating properties at viscosities of 20 to 380 mm ² /s (cSt)		
Installation torque		44 - 56 Nm (33 - 41 ft-lbs)
Recommended degree of fluid contamination		Nominal value max. 10 μm (NAS 8) ISO 4406 19/17/14
MTTFd		150 years see RE 18350-51
Cavity		CA-10A-2N see 18325-70
Seal kit for X=06	code	RG10A2010520100
	material no.	R901111363
Seal kit for X=04,32	code	RG10A2010530100
	material no.	R901111366
Seal kit coil and standard cap	code	RG02Z0010000100
	material no.	R930067869
Seal kit coil and protective cap only for Y=B	code	RG03Z0010000100
	material no.	R930067870
Seal kit coil and protective cap only for Y=C	code	RG04Z0010000100
	material no.	R930069171
Other technical data		See data sheet 18350-50
Electrical		
Type of voltage		DC voltage
Coil type		D36
Supply voltage		See data sheet 18325-90
Voltage tolerance against ambient temperature		See characteristic curve
Power consumption		20 W
Type of protection		See data sheet 18325-90
Note: Coils must be ordered separately		

Characteristic curves

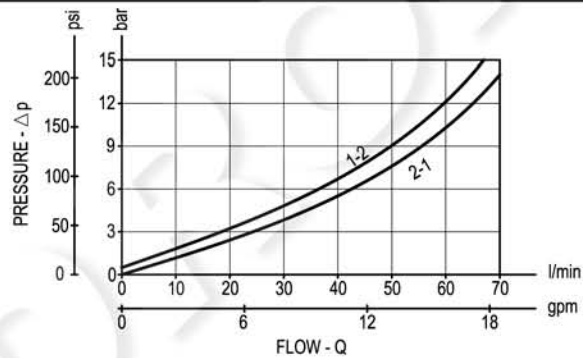
All Versions - Admissible supply voltage Vs. Ambient temperature at 100% duty cycle



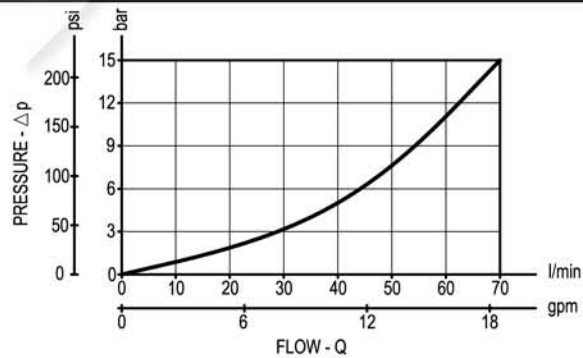
Version 06



Version 32



Version 04



Dimensions

Solenoid operated valves, poppet 2-way normally open

