

Part number:

DGMS - 5

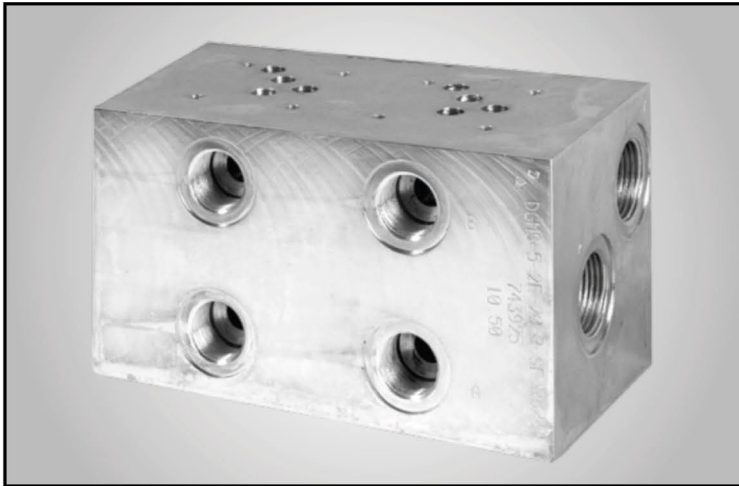
MULTI-STATION (IN-LINE) MANIFOLDS

| KE 7046 | 09/13 |

D_n 10 | p_n 35 MPa

Multistation manifolds DGMS-5 are basic elements for in-line mounting of hydraulic circuits in vertical stacking assemblies.

Dn 10, NG 10 | 1-6 sections |
Steel DIN 5355 3263 | Installation dimensions
according to: CETOP RP 121-H (CETOP 5),
ISO 4401-05, DIN 24340



FUNCTIONAL DESCRIPTION

Multi-station manifolds DGMS-5 provides an economical way of building vertical stacked hydraulic circuit using sandwich plate valves in combination with directional valve of size D_n 10. All hydraulic circuits have a common pressure and tank ports (P, T) that are situated on each end of the manifold. Each control circuit has a separate actuator ports (A, B) situated on the frontal area of the manifold.

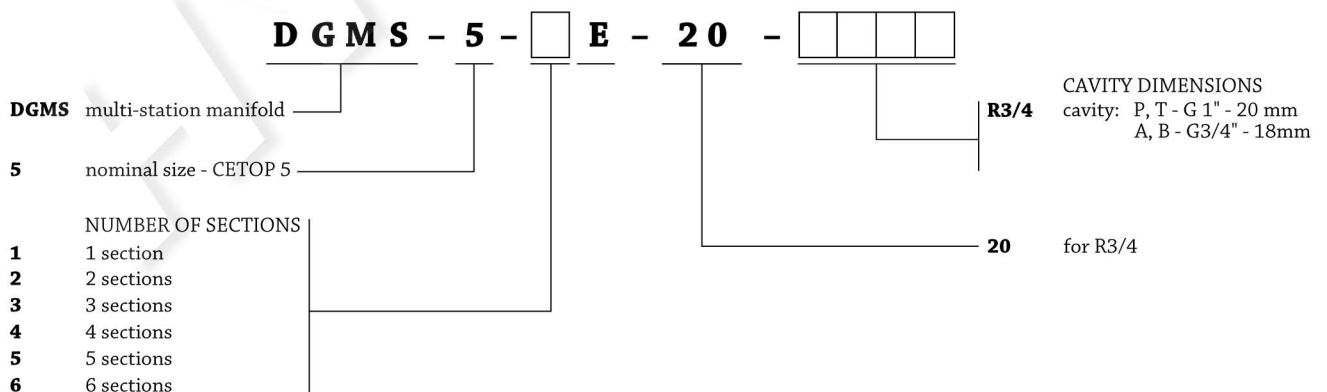
INSTALLATION, SERVICE AND MAINTENANCE

Multi-station manifolds DGMS-5 can be installed in any working position. Port cavities are designed for pipe or hydraulic hose connection. For cavity dimensions of P, T, A, B ports see the chapter Cavity dimensions of this datasheet. Machined pad must be provided if any section is not used.

DELIVERY

Fittings, machined pads with sealing and mounting screws are not included in the package. These must be ordered separately.

ORDERING CODE



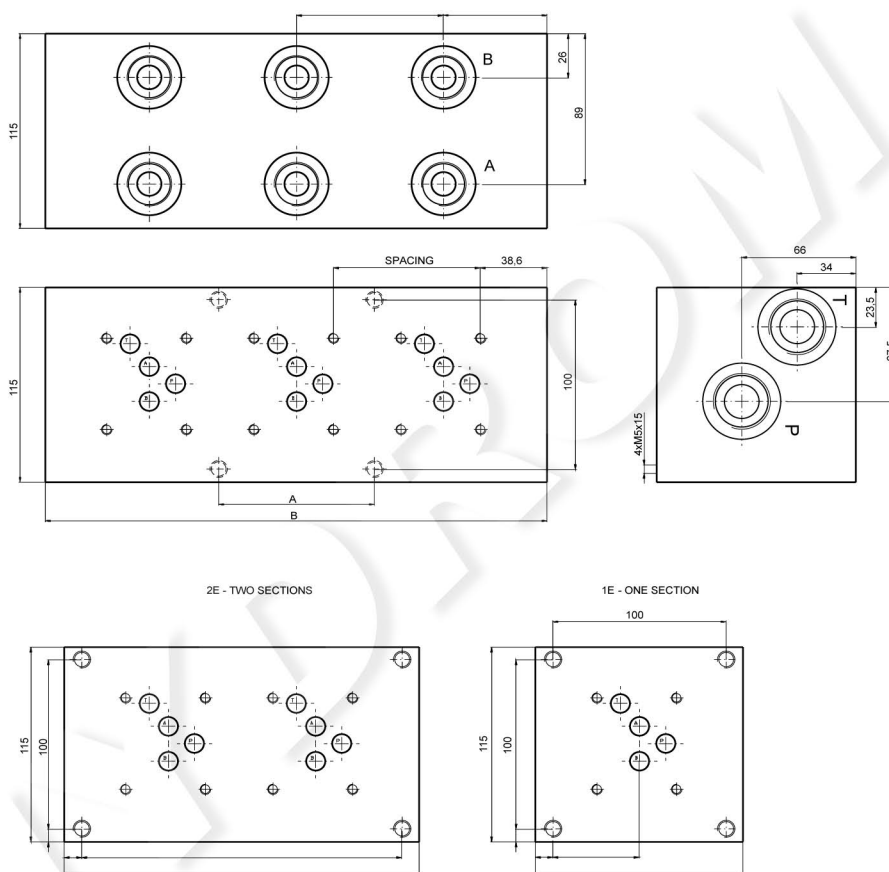
TECHNICAL DATA

| | Symbol | Unit | Value |
|---------------------------|----------|---|-------------------------|
| Nominal pressure | p_n | MPa | 35 |
| Fluid temperature range | t_{po} | °C | -20 up to +80 |
| Ambient temperature range | t_k | °C | -20 up to +70 |
| Hydraulic medium | | Hydraulic oils of power class (HL,HLP) according to DIN 51524 | |
| Weight | m | kg | see Manifold dimensions |
| Surface treatment | | Nickel plated | |
| Material | | Steel DIN 5355 3263 | |

MANIFOLD DIMENSIONS

DGMS-5-xE-20-R3/4

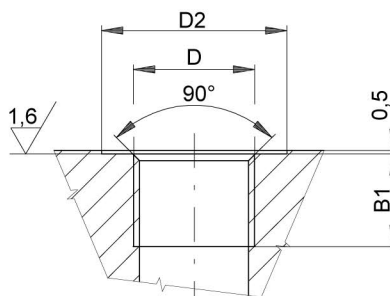
x - number of sections (1 ÷ 6)



| Type | x | A | B | Spacing | Weight [kg] |
|-------------------|---|-----|-----|---------|-------------|
| DGMS-5-1E-20-R3/4 | 1 | 100 | 120 | - | 12 |
| DGMS-5-2E-20-R3/4 | 2 | 185 | 205 | 85 | 20,5 |
| DGMS-5-3E-20-R3/4 | 3 | 90 | 290 | 85 | 29 |
| DGMS-5-4E-20-R3/4 | 4 | 175 | 375 | 85 | 37,4 |
| DGMS-5-5E-20-R3/4 | 5 | 260 | 460 | 85 | 45,9 |
| DGMS-5-6E-20-R3/4 | 6 | 345 | 545 | 85 | 54,3 |

CAVITY DIMENSIONS

| Cavity | Thread (D) | D2 | B1 |
|--------|------------|----|----|
| P, T | G 1" | 45 | 20 |
| A, B | G 3/4" | 37 | 18 |



Standard fitting dimensions are used for connecting ports P, T, A, B of the manifold. It is recommended to provide O-ring sealing to all pipe or hydraulic hose fittings.

INSTALLATION DIMENSIONS

According to CETOP RP 121H-R05 (CETOP 5)

